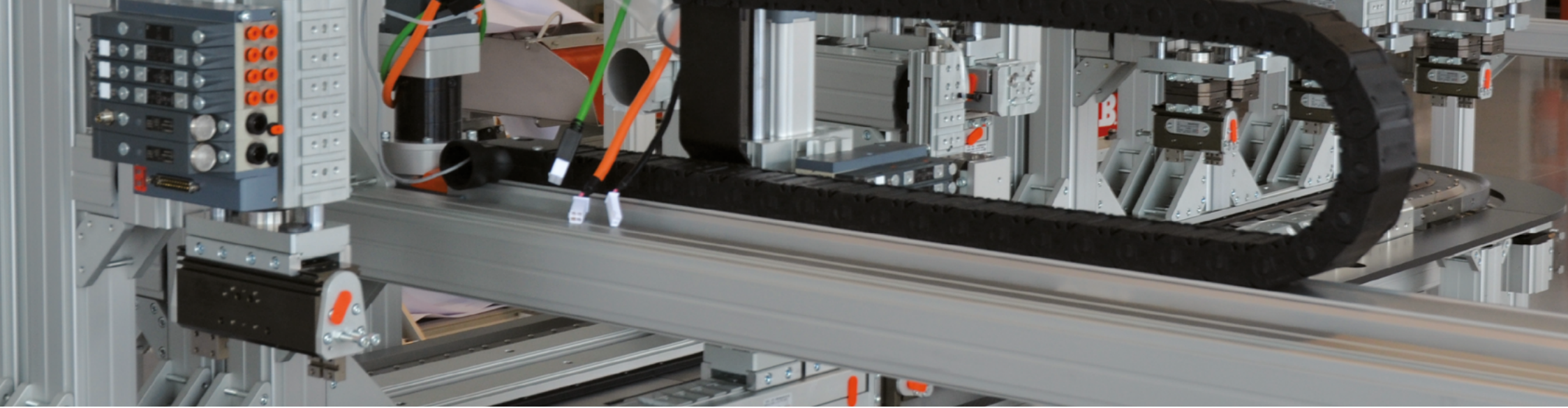


Metal Work Mechatronics



Metal Work Mechatronics: know-how and synergy at your service.



Electric cylinder,
Elektro ISO 15552 Series,
diam. from 32 to 100 mm;
Elektro ISO 15552 EK Series,
diam. 32 mm



Electric cylinder,
Elektro SSC Series, diam. 32 mm



Electric cylinders,
Round DC Elektro Series,
diam. 32 mm



Belt-drive rodless electric axis,
Shak Elektro Series, with
BRUSHLESS or STEPPING
motor



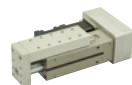
Two parallel belt-drive axis
surmounted by a transversal
axis, Shak Gantry Elektro
Series



Cantilever electric axis,
belt-drive rodless, with
motor placed on the
carriage, Elektro VBK series
and Elektro SVAK series.



Rodless electric axis,
with screw, Elektro SK
Series, and with toothed
belt, Elektro BK Series



Electric compact slide,
serie Elektro CS,
diam. 32 mm



Electric rotary actuator,
serie Elektro RBA,
rotation 360°



Control devices, e.motion
programmer, e.drive
programmable drive, and
e.direct drive



Guide units, flat slides
and precision slides,
Series S10, S11, S12,
S13 and S14



Customized products made
of aluminum, either alloy
steel and stainless steel,
studied in cooperation with
the customer according to
specific requirements



Wide range of 2 and 3 jaws
pneumatic grippers



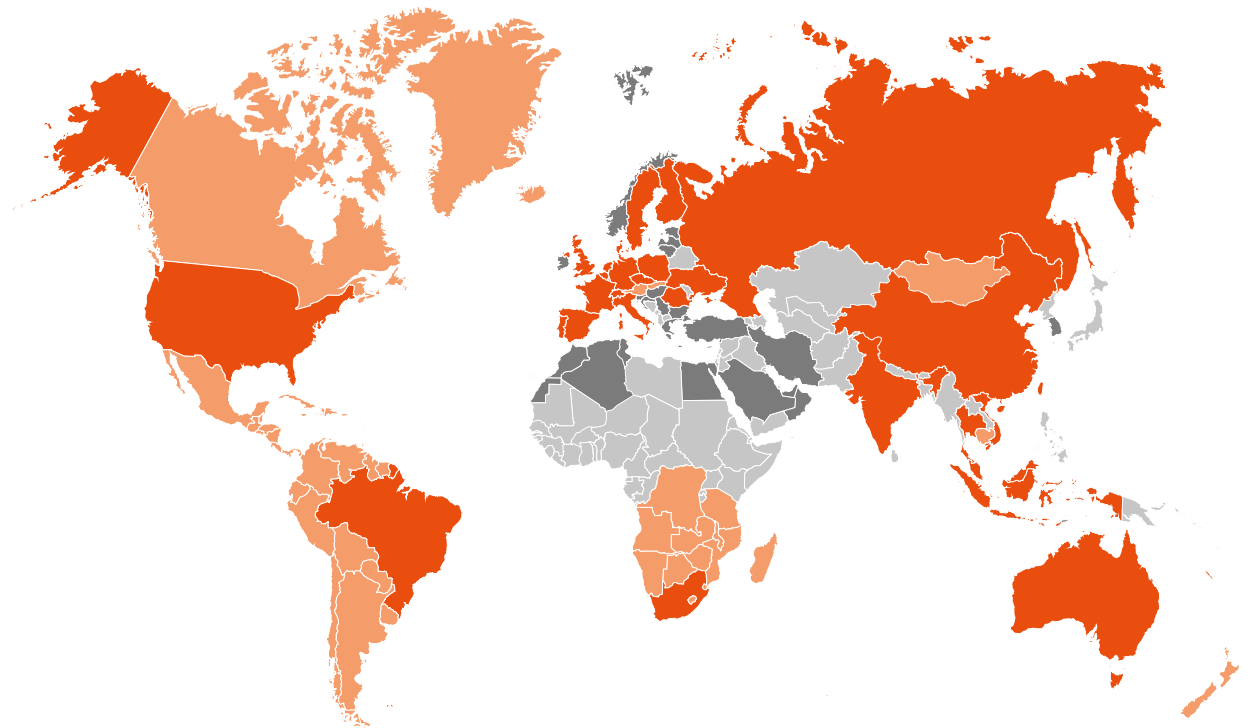
Stout and powerful rotary
actuators for torques up to
120 Nm, diameters from 12
to 100 mm



Electro-pneumatic system,
EB 80 Series, from 3 to 128
solenoid pilots



A global company.



■ Metal Work Group of Companies

■ Authorized dealers

Our subsidiaries in Italy



Bari
Bergamo
Bologna

Brescia
Cremona
Lecco
- Varese

Mantova
Modena
Monza Brianza

Novara
Parma
Prato

Rimini
Torino
Treviso

Verona
Vicenza

Our subsidiaries in the world



Australia
Belgio
Brasile
Cina
Danimarca

Finlandia
Francia
Germania
India
Indonesia

Malesia
Olanda
Polonia
Portogallo
Repubblica Ceca

Romania
Russia
Singapore
Spagna
Sud Africa

Svezia
Svizzera
Tailandia
Ucraina
Uk

Usa
Vietnam